

1 OUTCOMES #06

2 ABSTRACT

(o6) 2 stage outcomes project regarding Residential treatment for pre-teens. Stage 1 is an exploratory, using a convenience sample of referral and discharge profiles, gathered between December 2000 and October 2003. Stage 2 will use referral, discharge and 6 month follow-up data for 40 – 60 successive referrals, starting June 1 2004. (Residential treatment, pre-teens, kidsLINK, convenience sample, successive referrals, discharge, follow-up, Ontario, Waterloo)

2.1 ABSTRACT DATE / UPDATE

June 22, 2004

3 SERVICE TYPE

Residential treatment for pre-teens.

4 SERVICE DESCRIPTION

Residential Services are provided to children aged five (5) to twelve (12) of both sexes. Children admitted to a residential placement are experiencing severe socio-emotional difficulties, which have not been sufficiently addressed by less intrusive options.

5 AGENCY CONTEXT: REFERRAL TYPES AND VOLUMES

These agencies accept higher severity referrals only, and provide intensive services only, for teens and pre-teens. Less intensive services are offered for pre-schoolers, The agencies accept about 200 high-severity referrals per year in their common intake.

6 OUTCOMES SAMPLE TARGET

- The data gathered thus far (to June 30 2004) has been from a convenience sample of cases available to provide data at discharge.
- From June 1 2004, the agency will seek discharge and follow-up data from 40 – 60 successive discharges. This sample can will support a credible initial estimate of the program's apparent effect size,

7 DATA GATHERING POINTS AND METHODS

7.1 STAGE 1

- 'Before' data from a convenience sample of 27 parents, Dec 2000- Sept 2002 and 'After' data for 13 Discharges, July 2002 – Oct 2003. Average age at referral, 9.2 years, average stay 9 months, 80% males.

7.2 STAGE 2

- .Before' data from parents of 40 – 60 successive referrals, starting June 1 2004. Discharge Mental health, functioning and satisfaction data from parents of same cases, 6 month follow-up mental health and functioning data from parents of same cases.

8 START DATE

December 2000

9 QUARTERLY UPDATES

9.1 PROGRESS

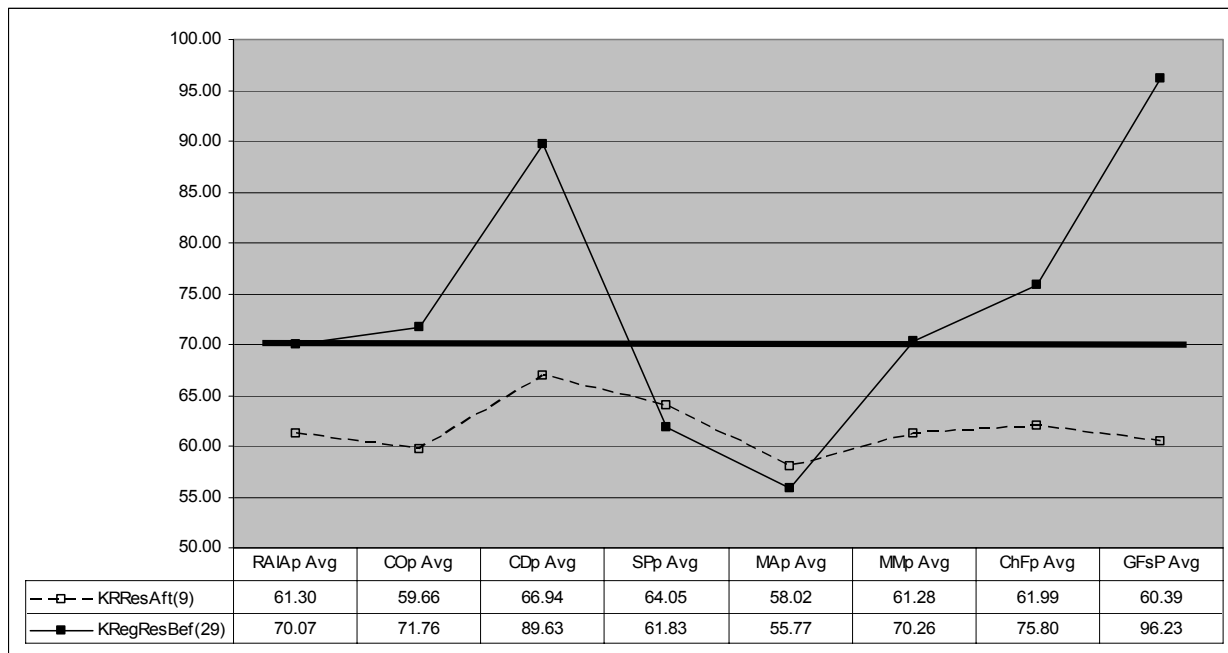
9.2 PROBLEMS

9.3 REVISIONS TO PLAN

As of June 2004, outcome and satisfaction data will be sought from 40 – 60 successive discharges, and 6 month outcome data. Average profiles will be compared, and effect sizes will be computed and compared to evidence-based benchmarks.

10 INTERIM REPORT

10.1 INTERIM: REFERRAL AND DISCHARGE PROFILES, STAGE 1



- Average age at referral, 9.2 years, average stay 9 months, 80% males.
- All Mental health and functioning scores which started above the clinical threshold showed moderate – large clinical improvement.
 - These gains ranged from > 2 SD for Family Adjustment and Conduct, and 0.9 – 1.4 SD for Managing Attention, Mood, Cooperativeness and Global Child functioning
 - All scores were below the clinical threshold (70) at discharge.

10.2 CLIENT SATISFACTION UPON DISCHARGE

- Data not gathered.

10.3 EFFECT SIZES FOR CASES WITH HIGH 'BEFORE' SCORES

- Calculation not justified, given exploratory nature of initial phase of this outcomes project.

